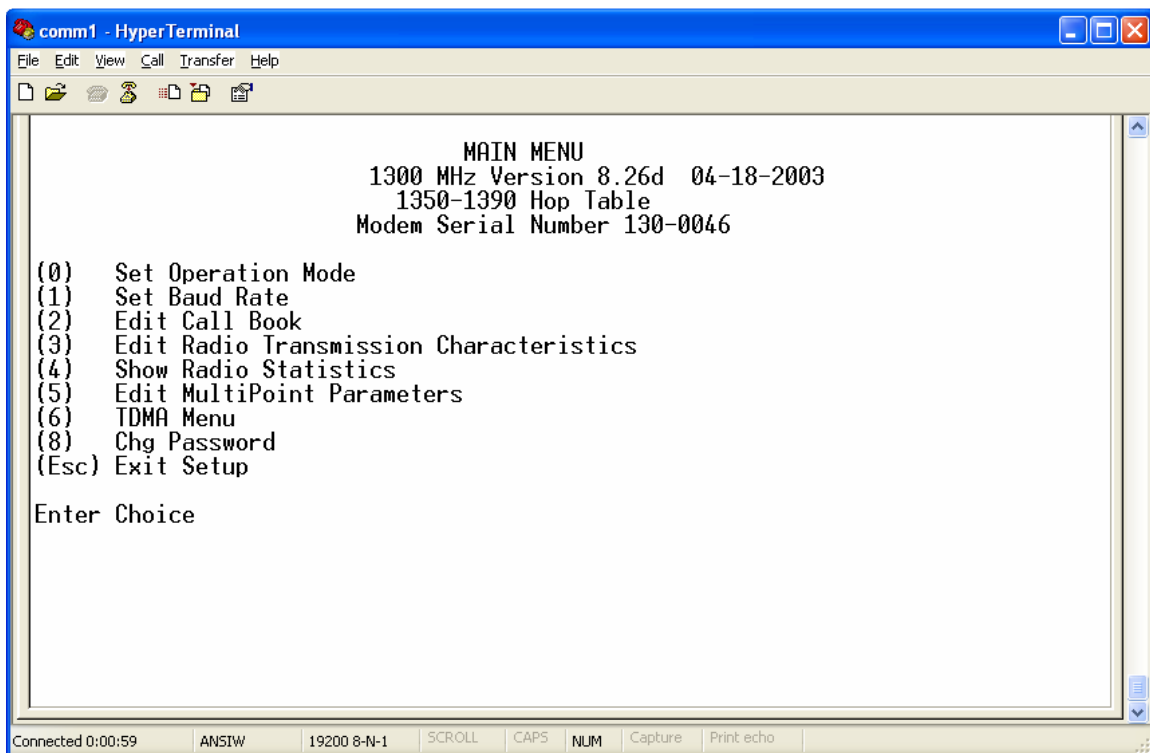


## FreeWave Technologies Inc. 1350-1390 MHz User Manual Addendum

The FreeWave Technologies 1350-1390 MHz transceivers operate in substantially the same manner as the 900 MHz and 2.4 GHz transceivers. All of the parameter options for Point-to-Point, Point-to-MultiPoint, TDMA, and PTT-TDMA are identical except for the frequency band options described in this addendum.

**Note:** It is imperative that all transceivers used in a network are set to identical frequency parameters.



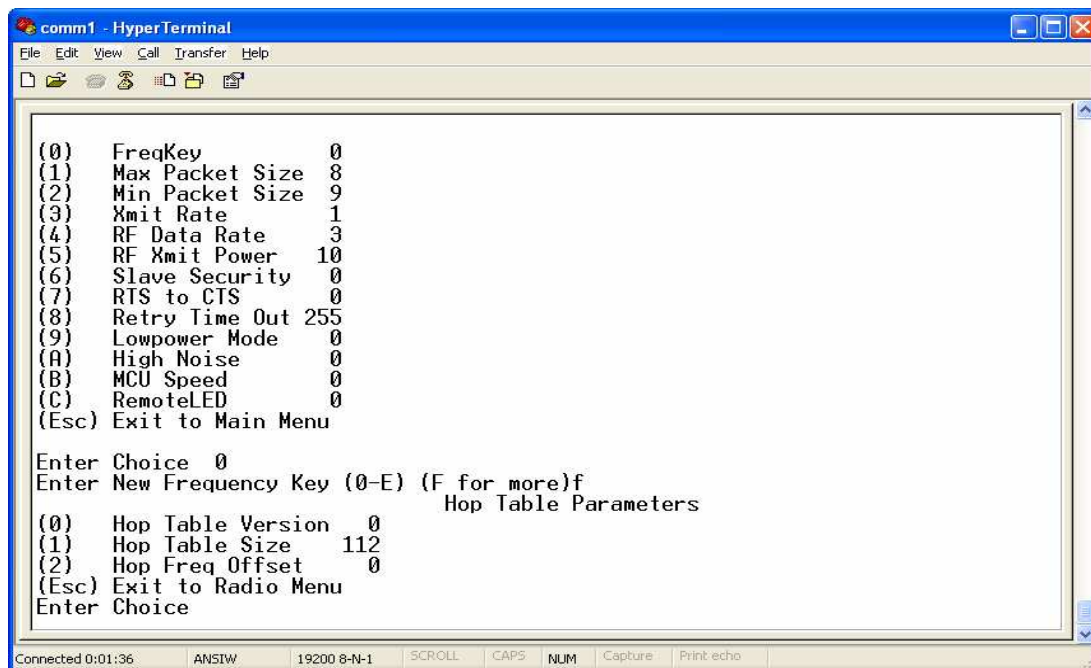
## Changing the Frequency Band

There are 6 different frequency bands that are user selectable with this transceiver model. They are listed in the table below. In order to change the frequency band, follow the steps below:

1. Press '3' at the Main Menu to display the Radio Transmission Characteristics Menu.
2. Press '0' to display the FreqKey submenu and then press 'F'.
3. To change the frequency bands, press '0' to change the Hop Table Version, and choose a number 0-6 that corresponds to the desired band. See the table below to which Hop Table Version number corresponds to which frequency band.

**1350-1390 MHz Frequency Table**

Hop Table Version	Frequency Band (MHz)
0	1350-1390
1	1350-1360
2	1360-1370
3	1370-1380
4	1380-1390
5	1350-1370
6	1370-1390



## **Operation in Single Frequency Mode**

To operate the transceiver in single frequency mode, please contact FreeWave Technologies at (800) 548-5616.