

FreeWave Technologies, INC.
1880 South Flatiron Court
Boulder, CO 80301

FreeWave Launches FreeWave Enterprise Gateway, enabling web-based access to non-IP addressable devices

FreeWave is launching a new software tool that allows customers to access devices from the web that were previously inaccessible. As companies consolidate and centralize more and more functions, network management from remote locations has become more and more important. Many devices allow such access but many also are not IP addressable and, therefore, present a challenge now met with FreeWave Enterprise Gateway.

How does it work?

FreeWave Enterprise Gateway is a software layer that resides on the computer at the master radio location. The master radio must be an Ethernet master to allow for web-based access. In a nutshell, the software assigns an IP address for those devices in the network that are not already IP addressable or do not, in other words, already have IP addresses assigned at the device such as many RTUs are today.

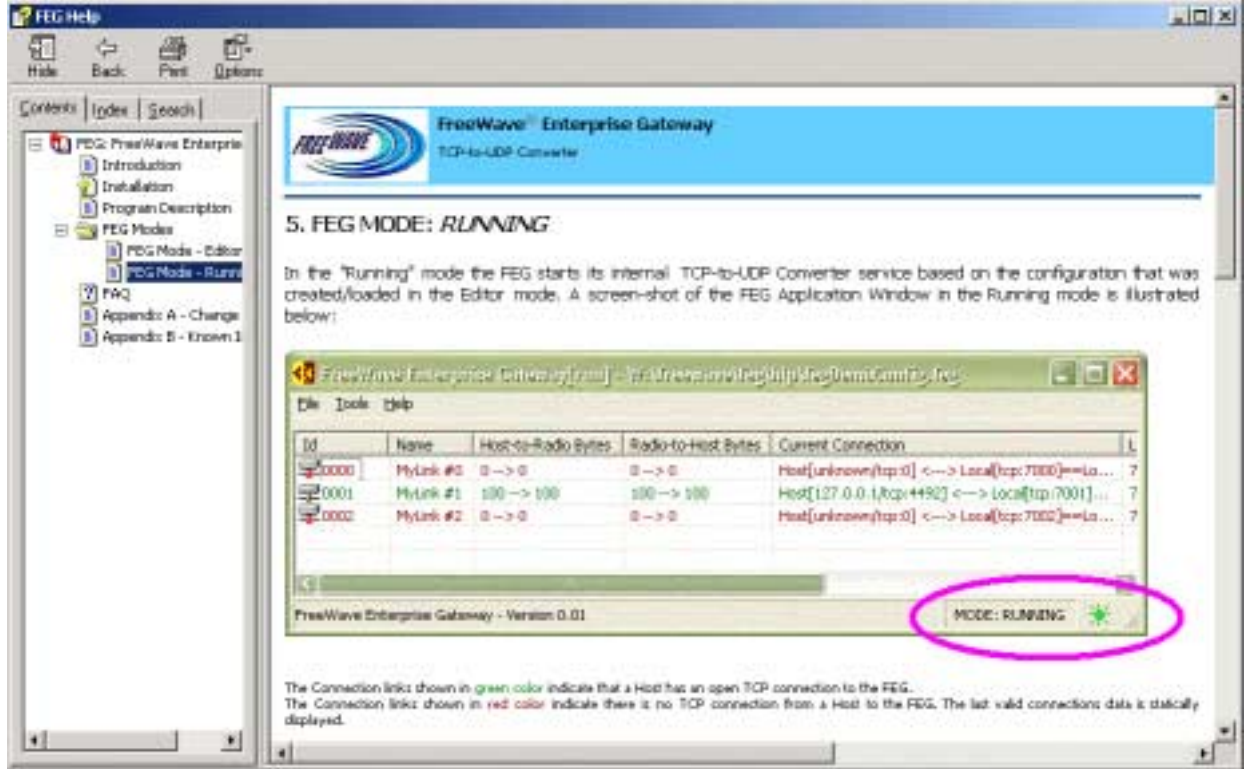
The software can manage network that mix device types and can assign IP addresses by a family of devices. Let's say, for example, that your network has RTUs from three different makers. Two of the three are IP addressable while the third is not. FreeWave Enterprise Gateway will allow you to pass data through the Ethernet master and over the web for devices from all three makers.

With this capability you can monitor your gas wells in numerous states all from Houston, your traffic systems from various networks or your water systems in numerous municipalities and do so all from any location where you have access to the Internet.

Easy Installation

The FreeWave objective is to combine its best-in-class radio networks with tools that make them also the easiest to use. FreeWave Enterprise Gateway's installation process meets that objective.

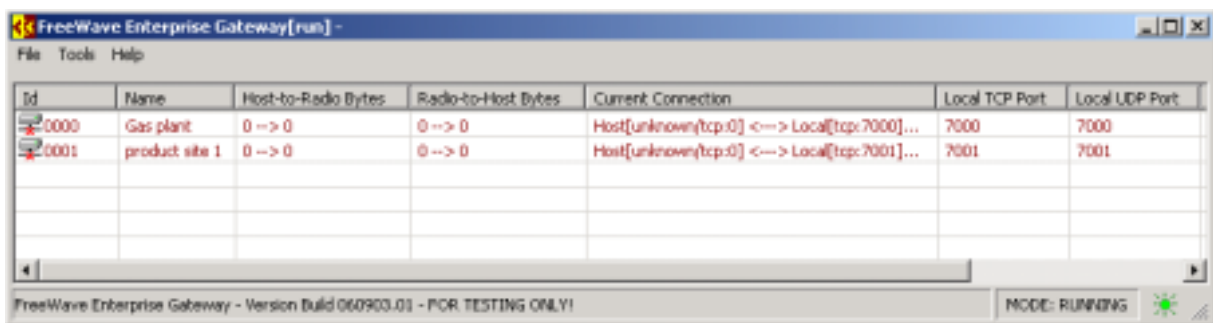
There are a handful of step-by-step instructions included as a Getting Started Guide. Onboard in the software is a complete set of Help tools that will allow you to troubleshoot the software in the uncommon event that something requires investigating. You will be able to assign IP address by following instructions imbedded in the software.



Just follow the menu instructions. In minutes the software will be installed on your computer at the Master Radio location. You will be ready to begin monitoring and, better yet, managing your critical information network.

Easy Monitoring

Once your software is installed, it will require very little attention. If you want to check in from time to time, simply click onto the icon and monitor data flow from your desktop. Here is an example of what you will see when you check in.



Sharing the Power

Whether your assignment is to run the business from a headquarters or to run the network on-site, you can now see the entire operation, run your polling software or change network parameters all from any location where you have web access.

If there comes a time for a meeting that requires looking at the network all at once from multiple locations, FreeWave Enterprise Gateway will be a key tool in that success. If

you can log into the same network, you will be able to share the same view making discussion and communication far more effective than ever before.

Staying Ahead with FreeWave Enterprise Gateway

This is another step in what is just the beginning of automated, remote network management and control. FreeWave Enterprise Gateway is ideally suited for large networks but will facilitate successful monitoring any size network. If you are an especially busy network manager, this is another in the collection of the right tool for you from FreeWave just as our radios are the right radios for your network.

Please contact your Business Development leader or contact FreeWave directly for more information. Our office number is 303.444.3862. You can email questions to us at moreinfo@freewave.com or visit our website, www.freewave.com.