













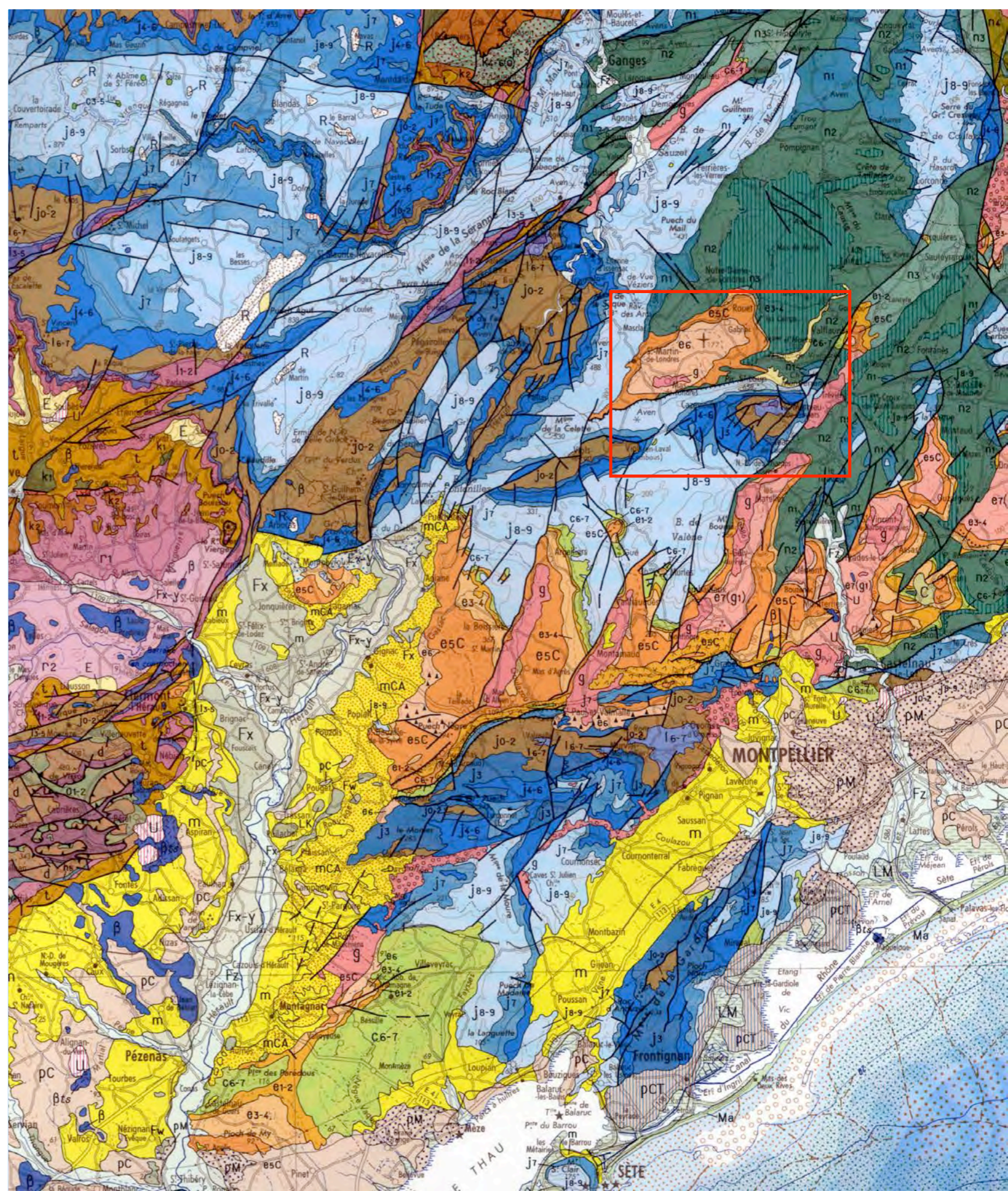
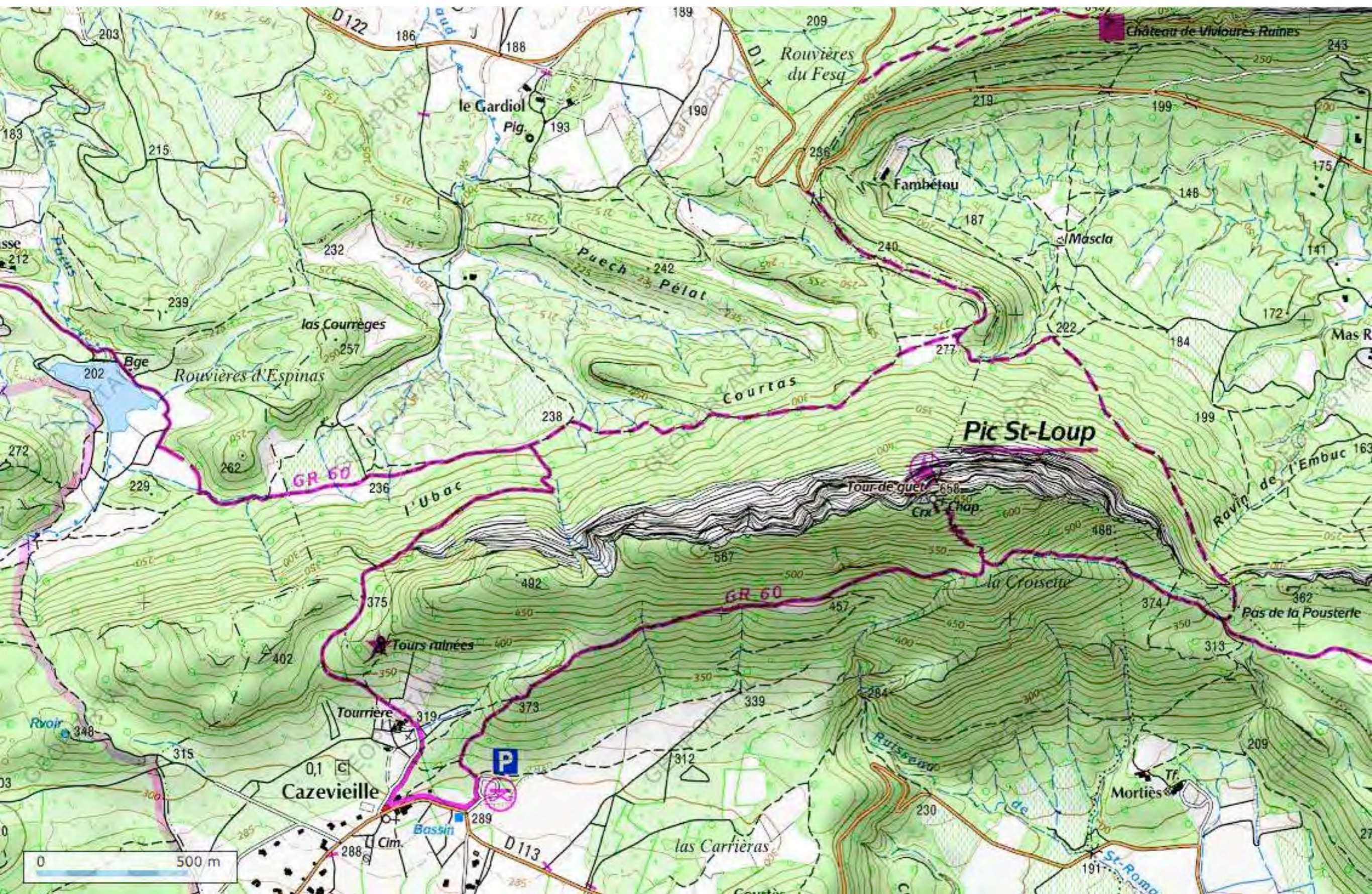


Extrait de la carte au
1/1.000.000^{ème}

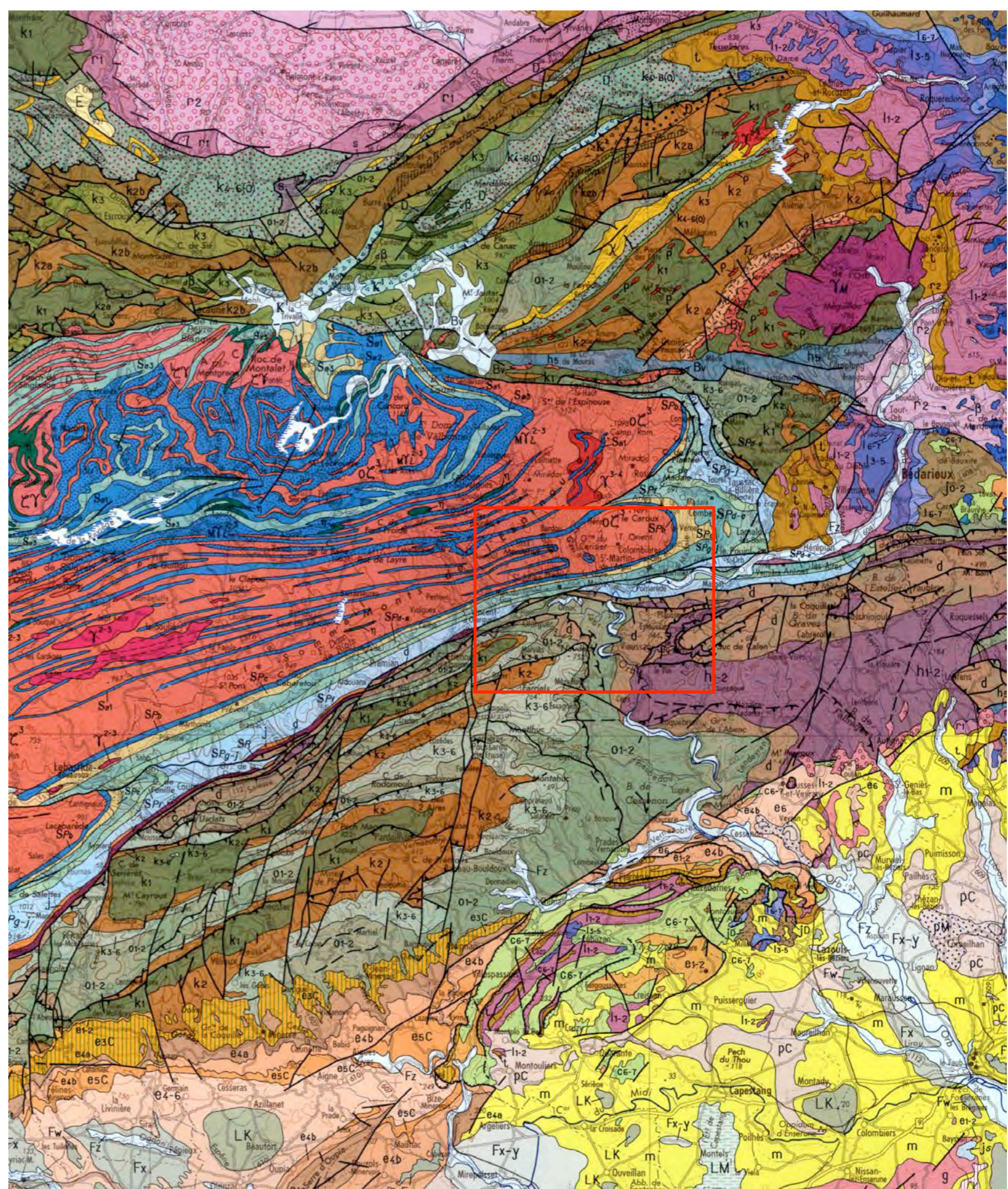
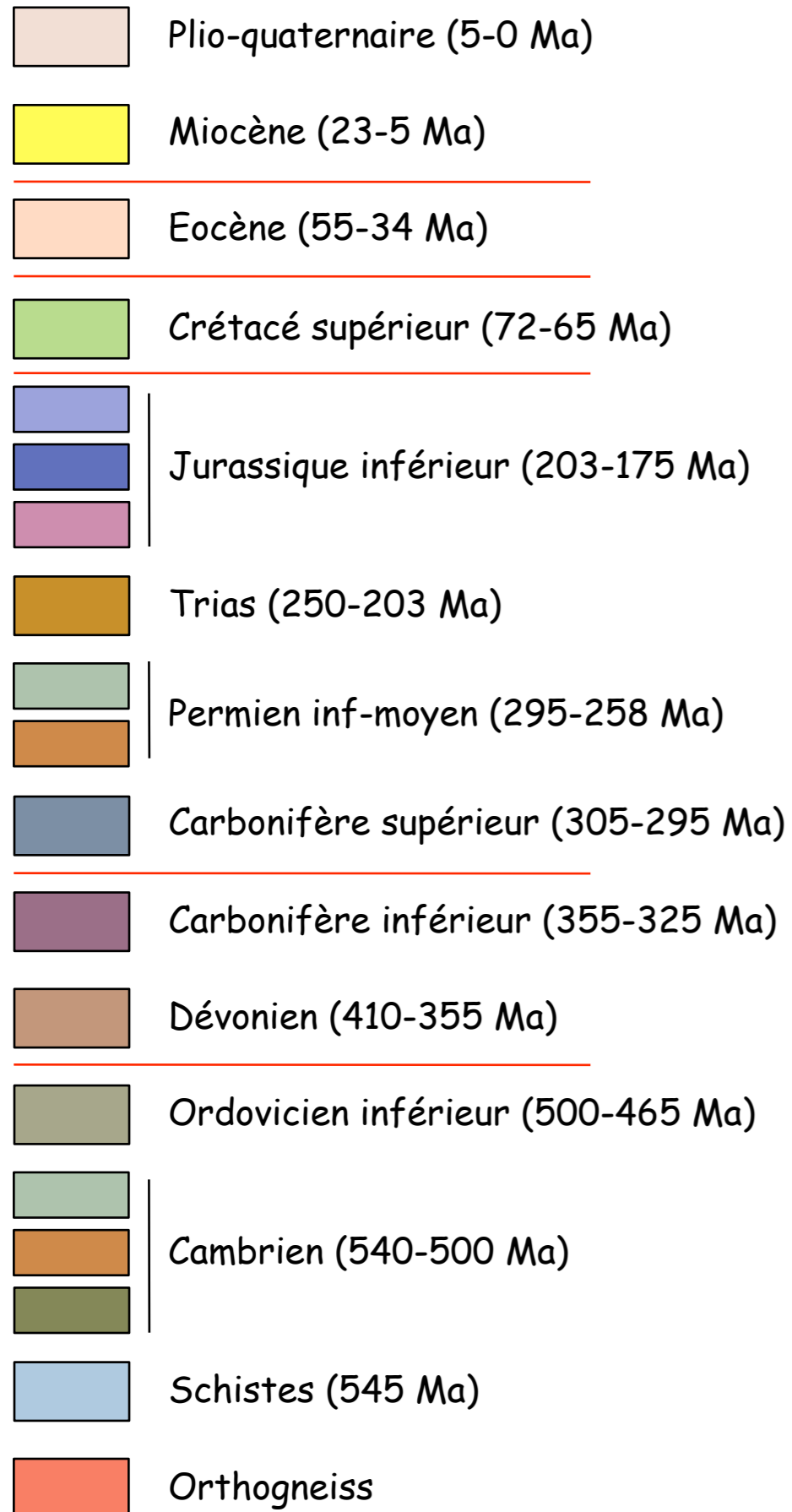
Région de Montpellier au 1/250.000^{ème}

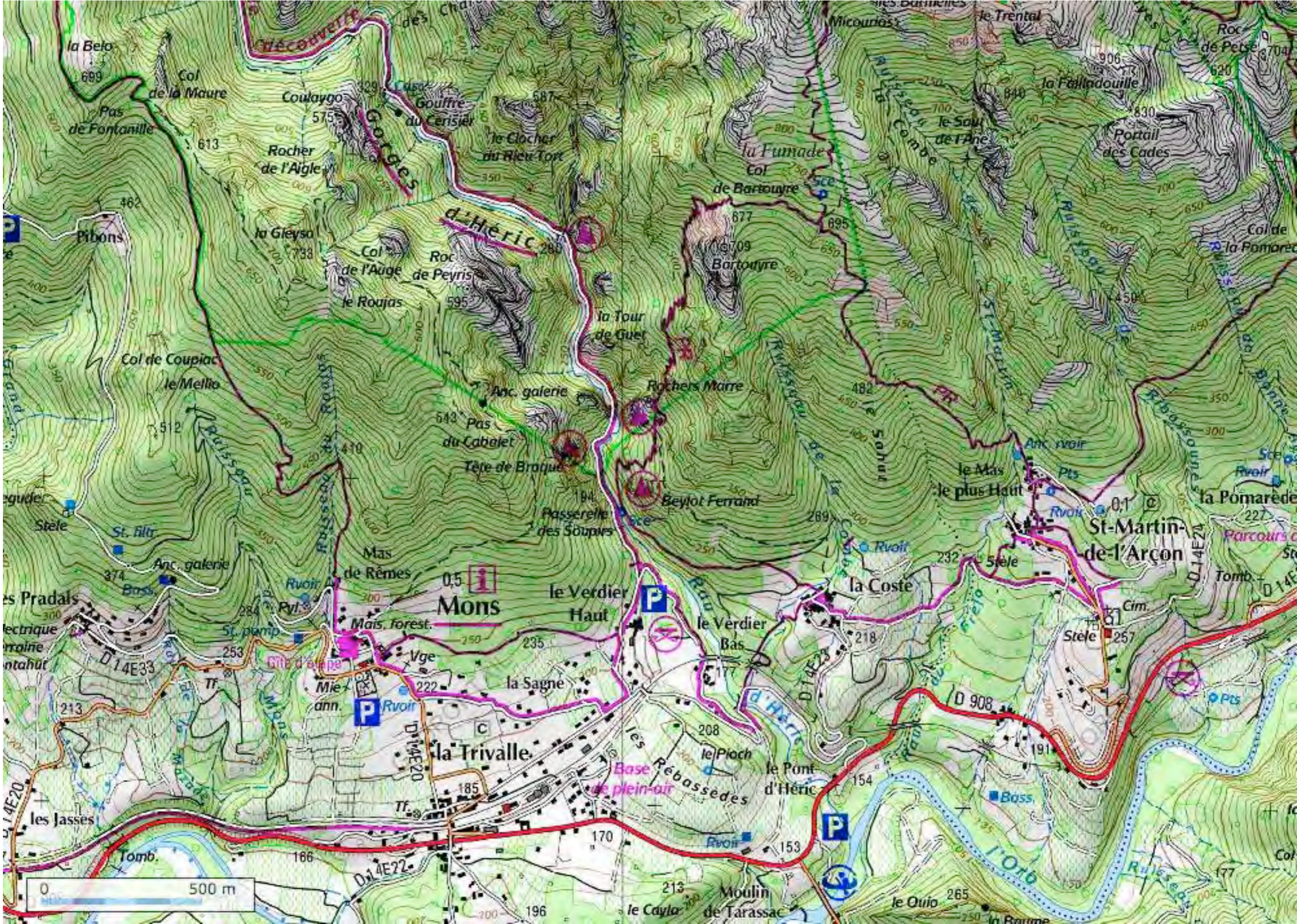
-  Basaltes quaternaires (0,7 Ma)
-  Quaternaire (2-0 Ma)
-  Pliocène (5-2 Ma)
-  Miocène (23-5 Ma)
-  Oligocène (34-23 Ma)
-  Eocène moyen-sup (46-34 Ma)
-  Paléocène Eocène inf. (65-46 Ma)
-  Crétacé supérieur (96-65 Ma)
-  Crétacé inférieur (135-96 Ma)
-  Jurassique supérieur (154-135 Ma)
-  Jurassique moyen (175-154 Ma)
-  Jurassique inférieur (203-175 Ma)
-  Trias (250-203 Ma)
-  Socle hercynien (> 320 Ma)



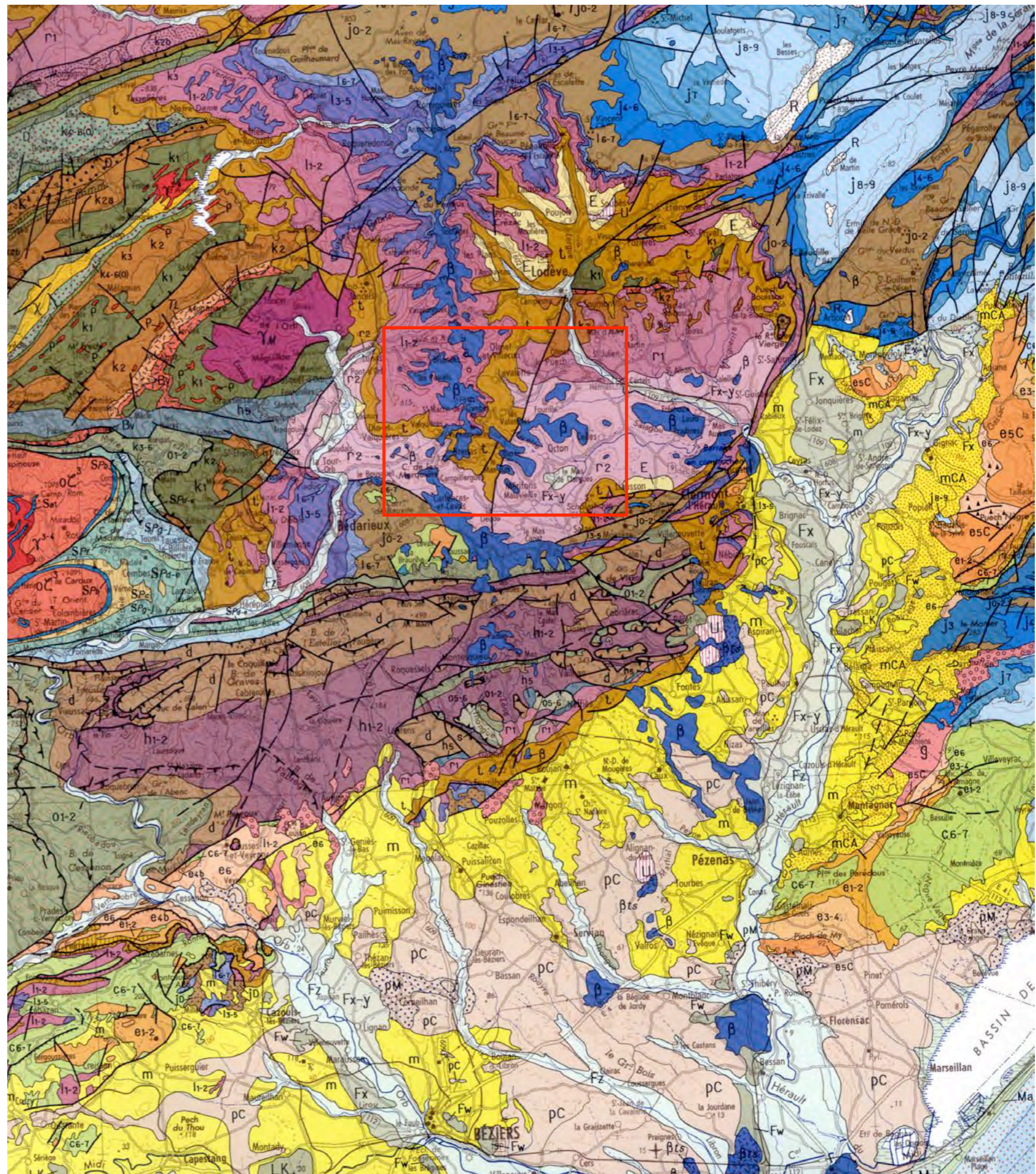
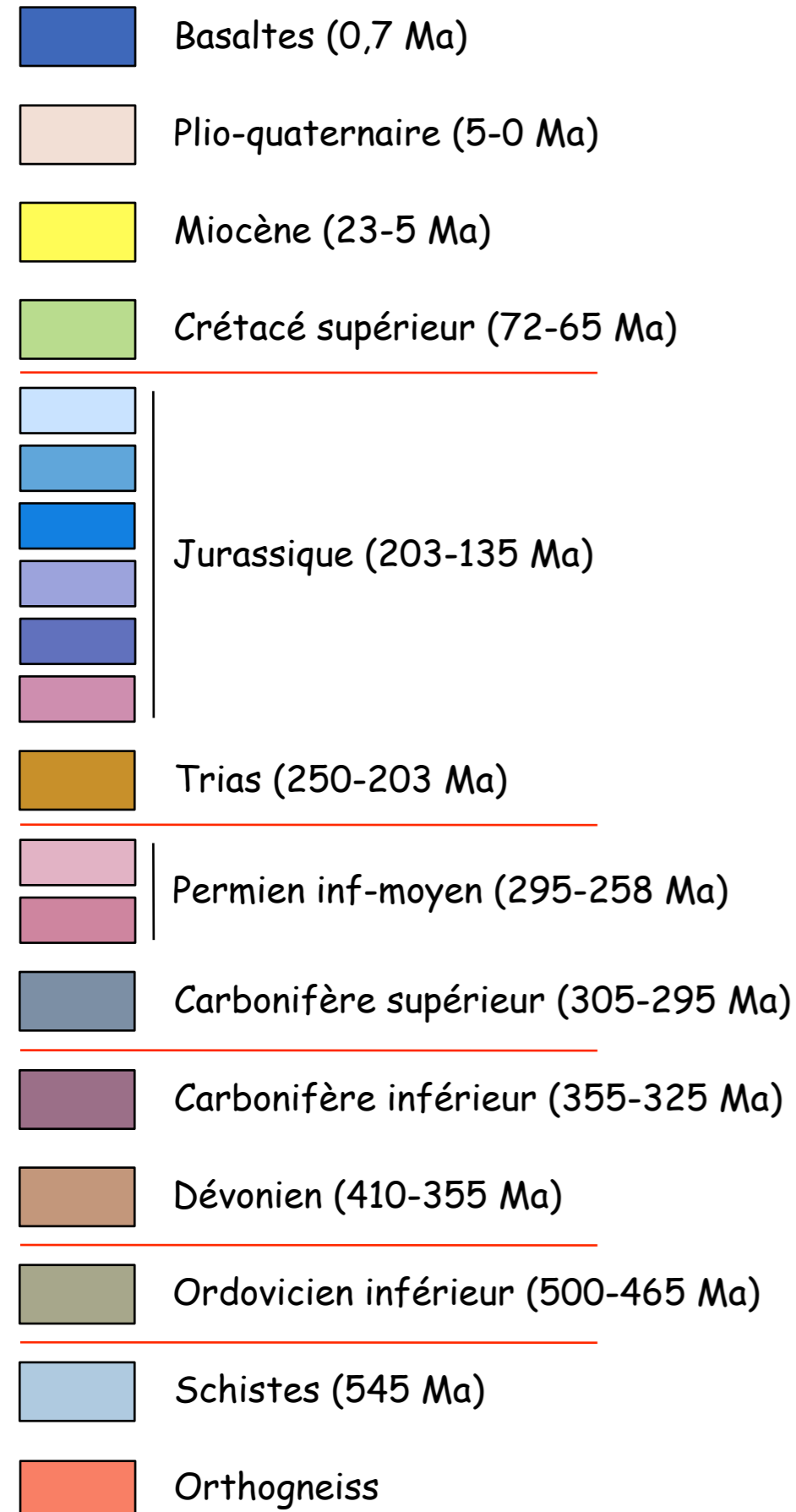


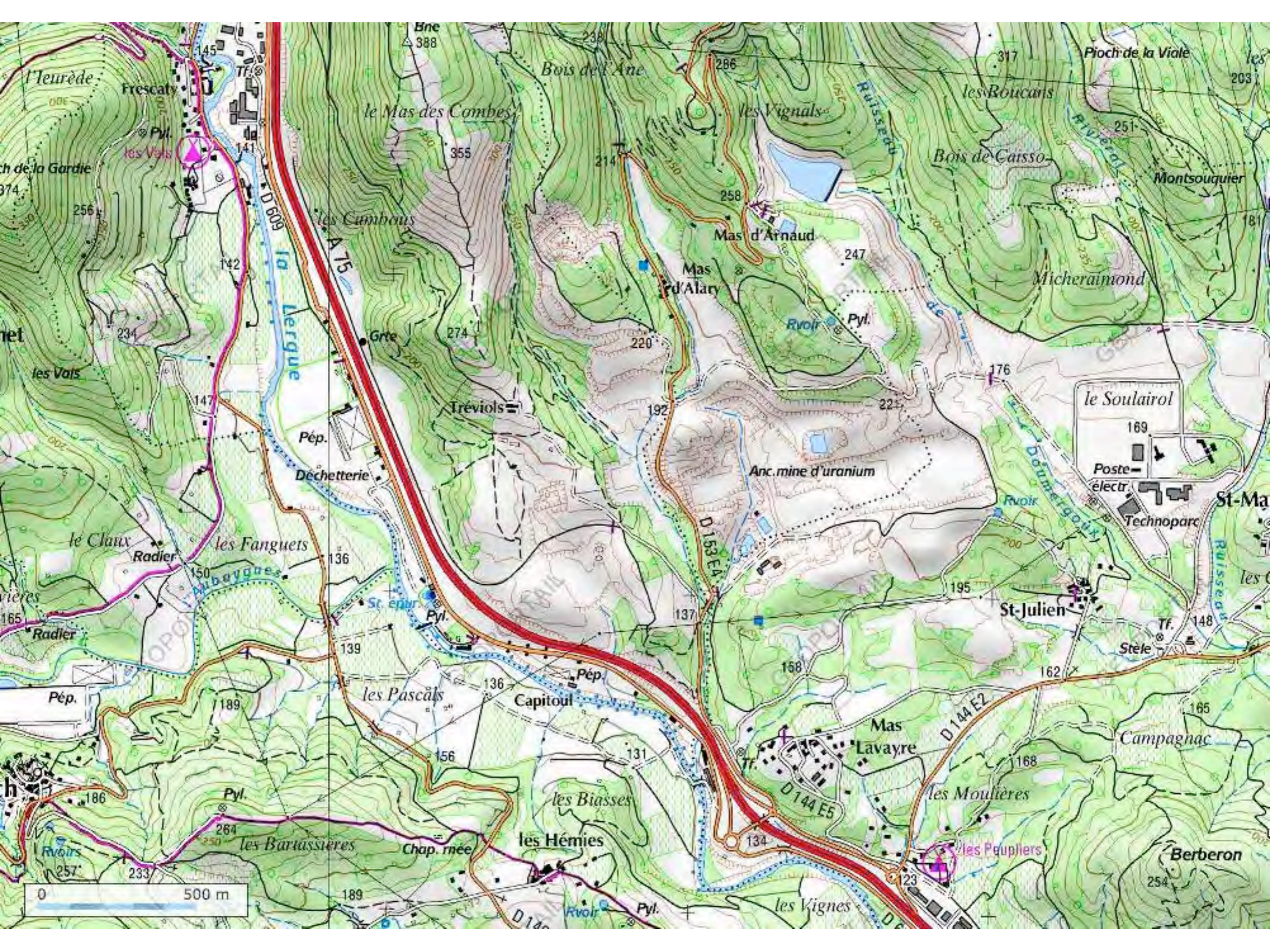
Montagne Noire au 1/250.000^{ème}





Région de Lodève au 1/250.000^{ème}





Région de Lodève au 1/250.000^{ème}

