

Proceedings of the International Astronomical Union

Date of delivery: 11 November 2013

Journal and vol/article ref: IAU 1301161

Number of pages (not including this page): 2

This proof is sent to you on behalf of Cambridge University Press. Please check the proofs carefully. Make any corrections necessary on a hardcopy and answer queries on each page of the proofs

Please return the **marked proof** within **7** days of receipt to:

Lorraine Webb, Production Editor
via managing editor of this symposium

Authors are strongly advised to read these proofs thoroughly because any errors missed may appear in the final published paper. This will be your ONLY chance to correct your proof. Once published, either online or in print, no further changes can be made.

To avoid delay from overseas, please send the proof by airmail or courier.

If you have **no corrections** to make, please email **lwebb@cambridge.org** managing editor to save having to return your paper proof. If corrections are light, you can also send them by email, quoting both page and line number.

- The proof is sent to you for correction of typographical errors only. Revision of the substance of the text is not permitted, unless discussed with the editor of the journal. Only **one** set of corrections are permitted.
- Please answer carefully any author queries.
- Corrections which do NOT follow journal style will not be accepted.
- A new copy of a figure must be provided if correction of anything other than a typographical error introduced by the typesetter is required.

- If you have problems with the file please contact

lwebb@cambridge.org

Please note that this pdf is for proof checking purposes only. It should not be distributed to third parties and may not represent the final published version.

Important: you must return any forms included with your proof. We cannot publish your article if you have not returned your signed copyright form.

NOTE - for further information about **Journals Production** please consult our **FAQs** at http://journals.cambridge.org/production_faqs

Author queries:

Q1: Please provide e-mail address.

Typesetter queries:

Non-printed material:

Solar wind fluctuations and solar activity long-term swing: 1963-2012

Zerbo, J. L.^{1,2}, Amory-Mazaudier, C.² and Ouattara, F.³

¹UFR/ST, Université Polytechnique de Bobo Dioulasso, Burkina Faso

²LPP-Laboratoire de Physique des Plasmas/UPMC/Polytechnique/CNRS,
UMR 7648, 4 Avenue de Neptune 94 107 Saint-Maur-des-Fossés, France

³Université de Koudougou, BP 376, Koudougou, Burkina Faso

email:

Q1

Abstract. In this study we investigate the time variation of several solar activity, geomagnetic indices, and solar wind parameters (B, V). It is well known that solar wind is one of the main contributing factors to geomagnetic activity and his topology is strongly affect by solar events such as CMEs and coronals. For these two solar events, we study the correlation between PCI and BV during solar cycle phases and point out the close link between PCI and the occurring of CMEs and high wind speed flowing from coronal holes.

Keywords. solar wind, solar activity indices-Joule heating, IMF reversal, PCI

1. Introduction

The Sun interacts with the Earth environment throughout radiation and solar wind. This permanent and variable interaction can cause sometimes severe damages to our society. Therefore the Sun-Earth study is so important for general science and the life on Earth as well. Since it is well known that the CMEs occur in majority on the maximum phase of the solar cycle and the high stream solar wind following from coronal holes occur during the declining of solar cycle, we choose in this paper to investigate the natural links between solar wind parameters (B, V) and the Polar Cap Index (PCI) introduced by Troshichev *et al.*, 1988, and used in a statistical sense as a measure of electric field. Our interest is to learn more about the link between the solar dynamo and the energy dissipated in interplanetary medium in the context of geomagnetic activity (Legrand and Simon, 1989; Zerbo *et al.*, 2012).

2. Data presentation

Based on the temporal distribution of solar events (CMES, coronal holes) and the fact that he Polar Cap Index can be used as a proxy of Joule heating effect (Francis K. Chun *et al.*, 1999), we investigate the level of the PCI during solar activity. The Figure presented in this work shows the time variations of the Interplanetary Magnetic Field (B), the sunspot number (Rz), the solar wind speed (V) and the Polar Cap Index during the period 1975-2012. We can remark that the peaks in PCI profile occur near the sunspot maximum and more frequently on the declining of solar cycle. We can assume that the peaks observed in PC index are closely linked with rapid solar wind streams from the coronal holes and CMEs. Using these observations, we investigate the correlation between the PCI and the BV and find the most interesting results, about $\approx 70\%$, on the maximum and declining phase of solar cycle. These results show that PCI is closely

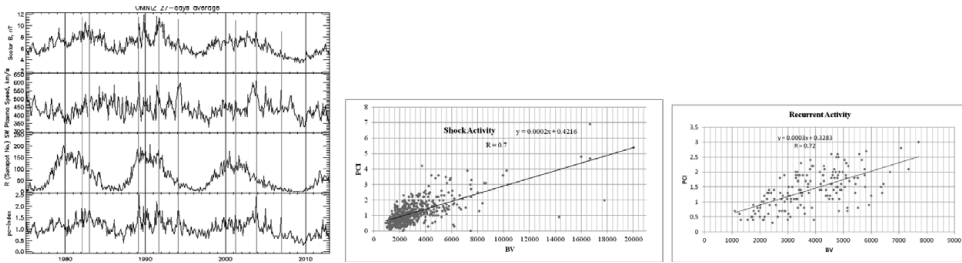


Figure 1. *left panel:* Time profiles of the Interplanetary Magnetic Field (B), the sunspot number (Rz), the solar wind speed (V) and the Polar Cap Index during the period 1975-2012, *middle panel:* Correlation between PCI and BV for Shock activity, *right panel:* Correlation between PCI and BV for Recurrent activity.

40 linked to BV and inform at the same time on the effects of solar wind and CMEs in
 41 the interplanetary medium and terrestrial atmosphere during the two solar cycle phases
 42 when the most important energy (Shock and high stream solar wind, Legrand and Simon,
 43 1989) is bring on the interplanetary medium by solar radiation.

44 3. Conclusion

45 The important remark is that the highest energy is produced near the sunspot maxi-
 46 mum and especially during the declining phase of solar cycle. This study shows that to
 47 investigate the interconnection between solar activity indices is very important for fore-
 48 casting the solar activity and to learn how the terrestrial atmosphere reacts during solar
 49 events. Our results point out the necessity to do studies for each class of solar events
 50 in order to know the different characteristics of the coupling between solar wind and
 51 magnetosphere.

52 References

- 53 Francis, K., *et al.* 1999, Polar cap index as a proxy for hemispheric Joule heating, *J. Geophys.*
 54 *Letter*, vol. 26, NO. 8, p. 1101–1104.
 55 Legrand, J. P. & P. A. Simon 1989, Solar cycle and geomagnetic activity: A review for geophysi-
 56 cists. Part I. The contributions to geomagnetic activity of shock waves and of the solar
 57 wind. *Annales geophysicae*, 7, (6).
 58 Ouattara, F. & C. Amory-Mazaudier 2009, Solar geomagnetic activity and Aa indices toward a
 59 Standard, *J. Atmos. Solar-Terr. Phys.*, 71, pp. 1736–1748.
 60 Troshichev, O. A., V. G. Andezen, S. Vennerstrm, & E. Friis-Christensen 1988, Magnetic activ-
 61 ity in the polar cap A new index, *Planet. Space Sci.*, 36, 1095.
 62 Zerbo, J.L., Amory-Mazaudier, C., Ouattara, F., & Richardson, J. 2012, Solar wind and geo-
 63 magnetism, toward a standard classification 18682009. *Ann Geophys.* 30, 4216.