

$t/\tau = 0$



$t/\tau = 2.43 \cdot 10^4$



$t/\tau = 6.95 \cdot 10^4$



$t/\tau = 1.46 \cdot 10^5$



$t/\tau = 1.92 \cdot 10^5$



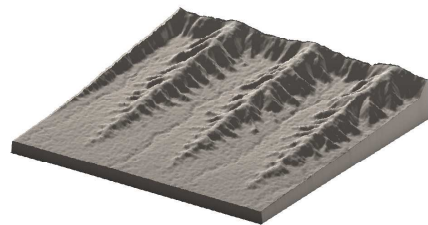
$t/\tau = 2.38 \cdot 10^5$



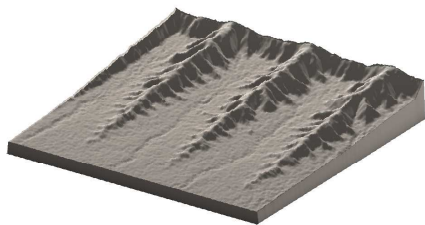
$t/\tau = 3.04 \cdot 10^5$



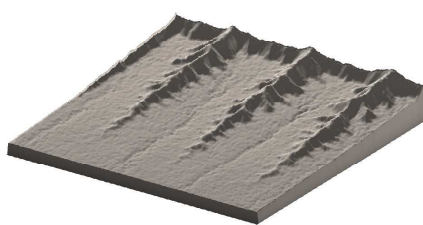
$t/\tau = 3.93 \cdot 10^5$



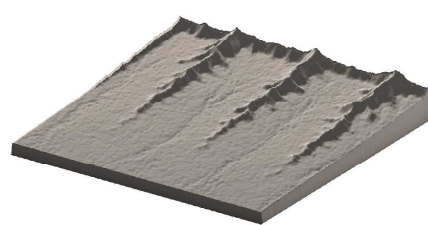
$t/\tau = 4.53 \cdot 10^5$



$t/\tau = 5.16 \cdot 10^5$



$t/\tau = 6.41 \cdot 10^5$



$t/\tau = 7.68 \cdot 10^5$